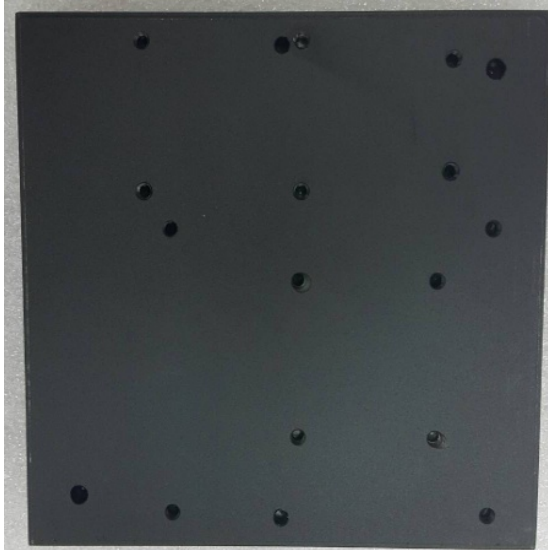


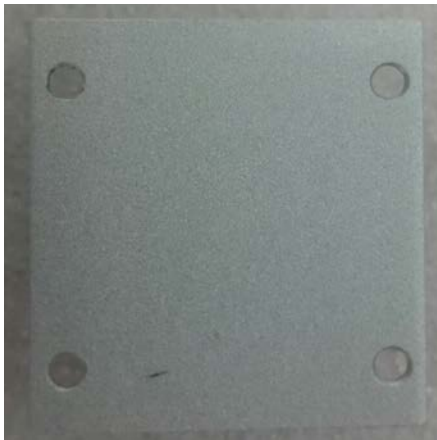
UP Chassis assembly SOP

Date: 24-01-2017

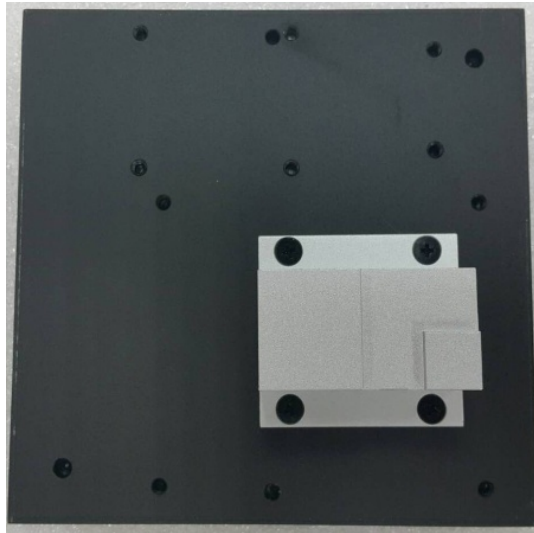
1. Place the top cover upside down on table



2. Take out AL block sink and 4 pcs black M2.5 4mm screw



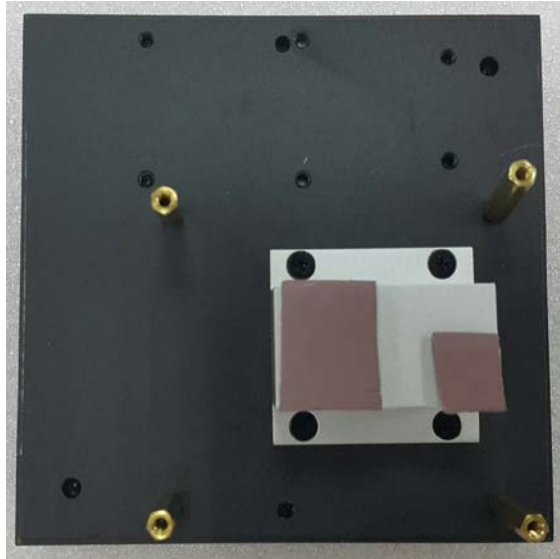
- 3. Screw the AL block sink to the top cover as below location**



- 4. Take out 4 pcs M2.5 stand off**



- 5. Screw the stand off as below location on the top cover**



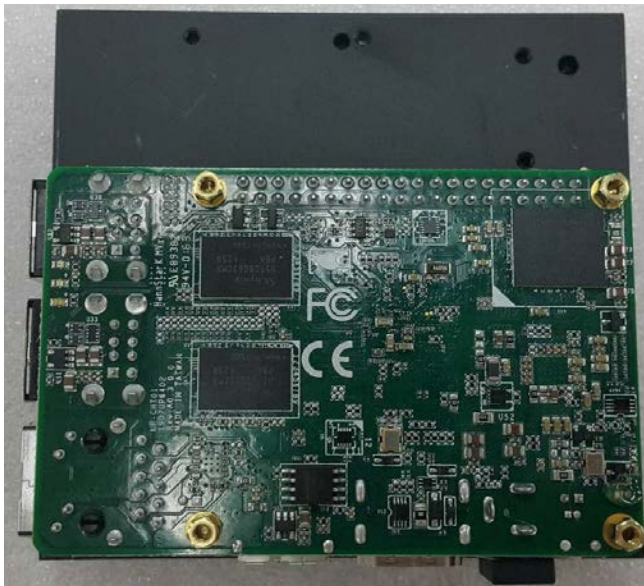
- 6. Place the RTC battery as below location on top cover, make sure UP board removed original heat sink and heat spreader for assembly**



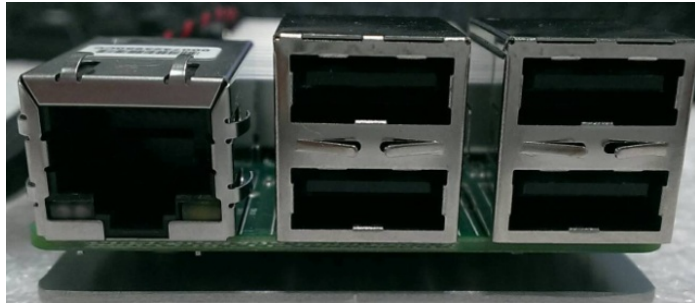
- 7. Take out 4 pcs M2.5 3.5mm stand off**



- 8. Place UP board upside down and screw the 4 pcs stand off as below location**



9. Assemble the top cover with UP board with bottom chassis, make sure USB ports align first



10. Align DC power Jack and make sure all ports are aligned.



11. Take out 4 pcs M2.5 4mm black screws



- 12. Screw on the 4 pcs M2.5 black screw on the bottom chassis to complete assembly**



Mouser Electronics

Authorized Distributor

Click to View Pricing, Inventory, Delivery & Lifecycle Information:

AAEON:

UP-GWS01-A10-0001